

## 6 EAST 46TH STREET

## GRAND CENTRAL OFFICE SPACE

NEWLY RENOVATED SPACE Between Madison & Fifth Avenues

As exclusive agent for the landlord, City Connections Realty is pleased to offer the following space for lease:

**Space/Area:** Suite 300 / 1,669 RSF

**Possession:** Immediate

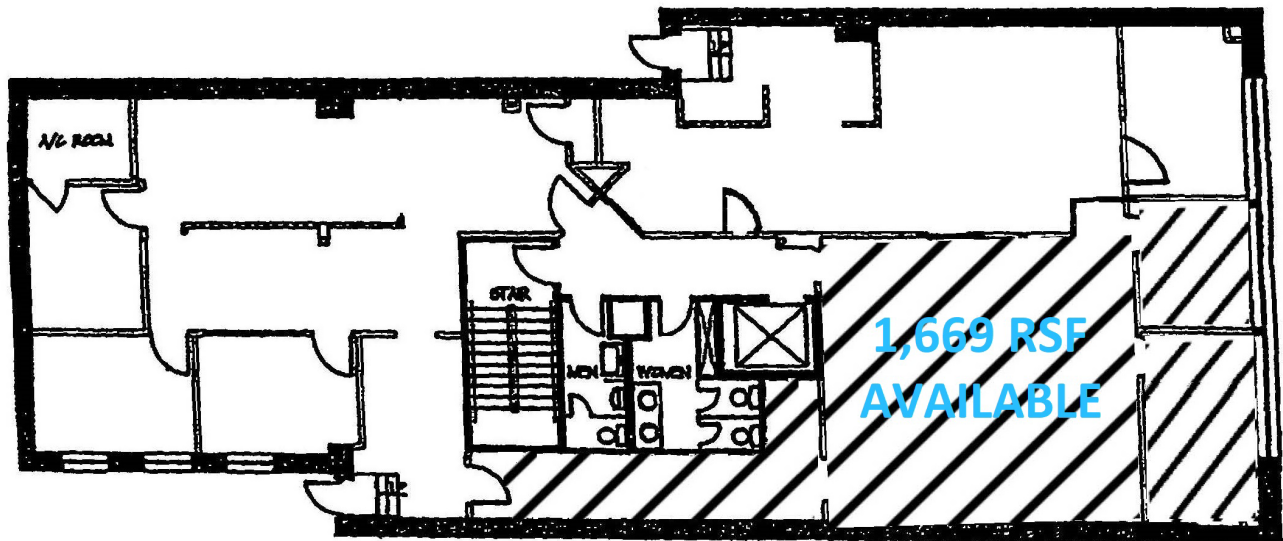
**Term:** 3-5 Years

**Electricity:** \$3.25 PSF

**Rent:** ~~\$48 PSF~~ **NOW \$44 PSF !**

### Features:

- Two (2) Windowed Offices (Facing 46th St)
- Owner / Management On Site
- 24/7 Access



**Herb Goldberg**  
Commercial Manager  
(O) 212.994.3256  
(M) 917.488.4742  
herbg@ccrny.com

**Israel Jungreis**  
Senior Director  
(O) 212.994.3234  
(M) 917.576.3431  
israelj@ccrny.com

A commission in accordance with our principal's schedule of rates and conditions will be paid, when received by us, to the procuring broker who, having executed and delivered our brokerage agreement to us, consummates a lease or sublease which has been executed by both the landlord and tenant, approved as required, and duly consented to by the overlandlord in the event of a sublease. This writing does not constitute, and shall not be construed as, an employment; and no commission shall be deemed earned, due or payable unless and until a lease or sublease (as the case may be) is fully consummated. Although all information furnished herein is from sources deemed reliable, such information has not been verified, and no express representation is made nor is any to be inferred as to the accuracy thereof, and it is submitted subject to errors, omissions, change of rental and other conditions, prior lease, or withdrawal without notice.