

636 West 158th St, NEW YORK, NY 10032

RETAIL
COMMERCIAL SPACE FOR RENT



45 West 21st ST, SUITE 300, NEW YORK, NY 10010
T: 212.627.7800 F: 212.627.8150 WWW.CCRNY.COM

RETAIL - COMMERCIAL SPACE FOR RENT

Location:

636 West 158th St, New York, NY 10032

Between Broadway and Riverside Drive

Approximate size:

Total: 23,950sqf

Ground level: 7,150 SF

Frontage: 81 feet

Ceilings height: 17 feet majority of the space

Upper lower floor: 8,200 SF

Lower floor with street exit: 8,600 SF

Ground Floor Terrace for future C.F.: 650 SF

Rent:

Upon request

Site Status:

New Construction

Terms:

10-15 years

Use:

Medical, healthcare facilities,
community centers, daycare center, office

Comments:

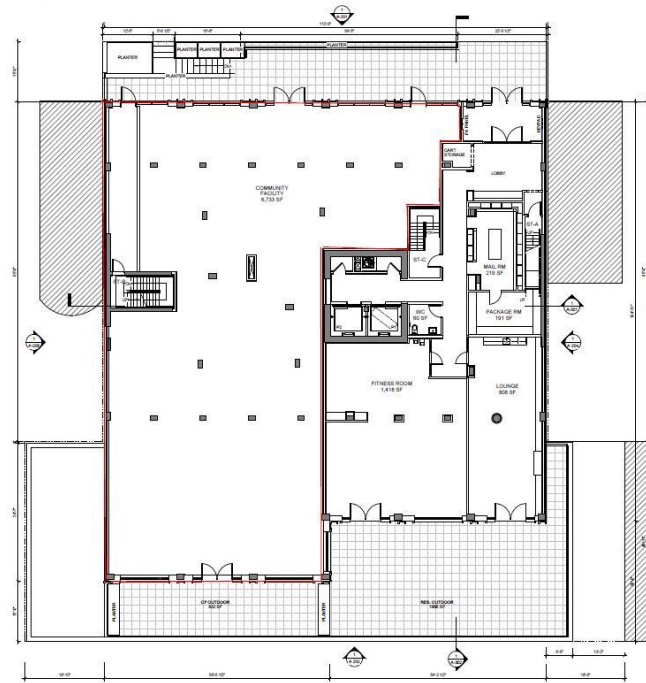
All new space in residential new development building.

2 blocks away from train stop **1**



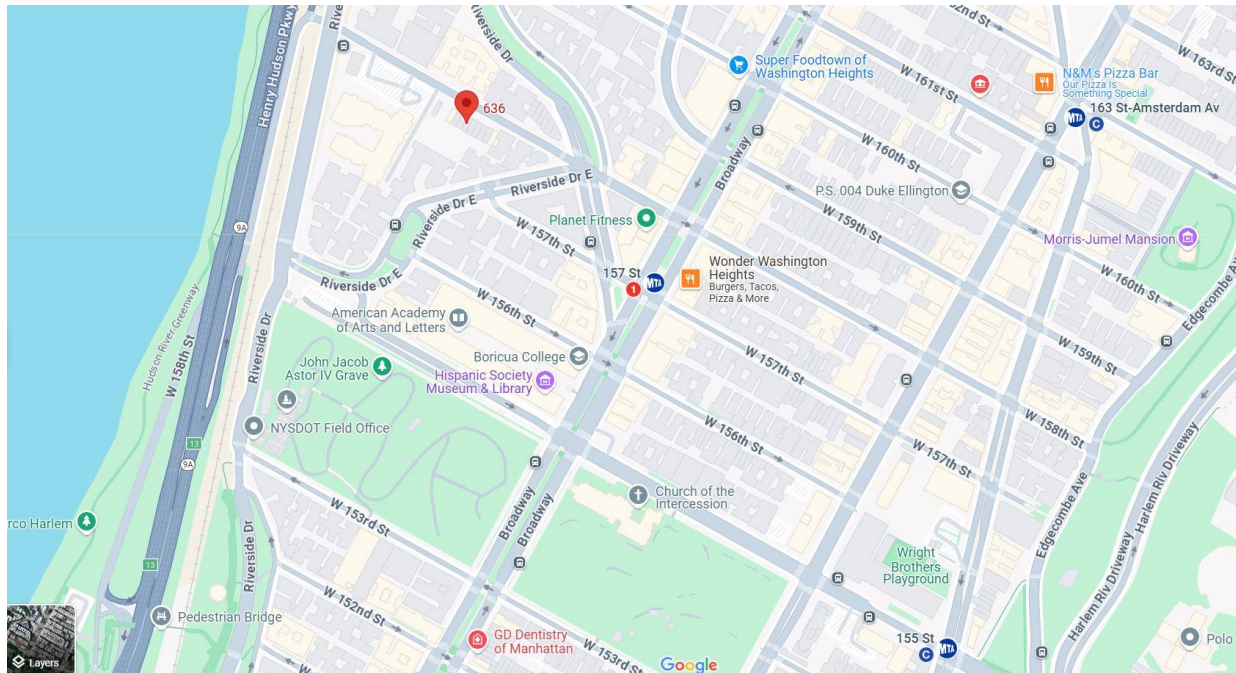
636 West 158th St, New York, NY 10032

Ground Floor Plan



City Connections Realty Inc Licensed in New York, Real-estate Broker
The information contained herein has been obtained from sources deemed reliable but not been verified and no guaranty, warranty or representation, either express or implied, is made with respect to such information. Terms of sale or lease and availability are subject to change or withdrawal without notice.

636 West 158th St, New York, NY 10032 Between Broadway and Riverside Drive



Contact:

Laki Latinka Djokovic

(Licensed as: Latinka Igrutinovic)

917.836.5695

laki@ccrny.com

Proud Member
REBNY
REAL ESTATE BOARD OF NEW YORK

CRA CERTIFIED
REAL ESTATE
ADVISOR



City Connections Realty Inc Licensed in New York, Real-estate Broker

The information contained herein has been obtained from sources deemed reliable but not been verified and no guaranty, warranty or representation, either express or implied, is made with respect to such information. Terms of sale or lease and availability are subject to change or withdrawal without notice.